

Day-Lee Foods, Inc.

PRODUCT
CATALOG



Day-Lee Foods, Inc.

PRODUCT CATALOG

Phone : +1-562-903-3020

Web : www.day-lee.com

10350 Heritage Park Dr. Suite 111 Santa Fe Springs California 90670



Wagyu

Beef





Chicken

Others



Tuna

Salmon



Fish (Others)



Shrimp



Shellfish



Others







Wagyu

ITEM #: B0805A

Japan Wagyu Beef Ribeye A5



| | |
|---------------------------------|---|
| Brand: | — |
| Origin: | — |
| Specifications: | — |
| Case Weight: | — |
| Temperature: | — |
| Available Package Sizes: | — |
| Packaging: | — |

Wagyu

ITEM #: B0815A

Japan Wagyu Beef Strip Loin A5



| | |
|---------------------------------|---|
| Brand: | — |
| Origin: | — |
| Specifications: | — |
| Case Weight: | — |
| Temperature: | — |
| Available Package Sizes: | — |
| Packaging: | — |

Wagyu

ITEM #: Item #: B0825A

Japan Wagyu Beef Tenderloin A5



| | |
|---------------------------------|---|
| Brand: | — |
| Origin: | — |
| Specifications: | — |
| Case Weight: | — |
| Temperature: | — |
| Available Package Sizes: | — |
| Packaging: | — |

Wagyu

ITEM #: B0845A

Japan Wagyu Beef Chuck Roll A5



- Brand:** —
- Origin:** —
- Specifications:** —
- Case Weight:** —
- Temperature:** —
- Available Package Sizes:** —
- Packaging:** —

Wagyu

ITEM #: B0885A

Japan Wagyu Beef Chuck Short Rib A5



| | |
|---------------------------------|---|
| Brand: | — |
| Origin: | — |
| Specifications: | — |
| Case Weight: | — |
| Temperature: | — |
| Available Package Sizes: | — |
| Packaging: | — |

Beef

ITEM #: 20000

1/3" Sliced Beef short rib



Brand: —
Origin: —
Specifications: —
Case Weight: —
Temperature: —
Available Package Sizes: —
Packaging: —

Beef

ITEM #: 20006

Sliced Lip on Spencer



| | |
|---------------------------------|---|
| Brand: | — |
| Origin: | — |
| Specifications: | — |
| Case Weight: | — |
| Temperature: | — |
| Available Package Sizes: | — |
| Packaging: | — |

Beef

ITEM #: 20017

Sliced Beef Chuck Eye Roll



| | |
|---------------------------------|---|
| Brand: | — |
| Origin: | — |
| Specifications: | — |
| Case Weight: | — |
| Temperature: | — |
| Available Package Sizes: | — |
| Packaging: | — |

Beef

ITEM #: B0001

Beef Lip on Rib Eye



| | |
|---------------------------------|---|
| Brand: | — |
| Origin: | — |
| Specifications: | — |
| Case Weight: | — |
| Temperature: | — |
| Available Package Sizes: | — |
| Packaging: | — |

Beef

ITEM #: B0007

Beef Outside Skirt



| | |
|---------------------------------|---|
| Brand: | — |
| Origin: | — |
| Specifications: | — |
| Case Weight: | — |
| Temperature: | — |
| Available Package Sizes: | — |
| Packaging: | — |

Beef

ITEM #: B0015

Beef NY Striploin 0X1



| | |
|---------------------------------|---|
| Brand: | — |
| Origin: | — |
| Specifications: | — |
| Case Weight: | — |
| Temperature: | — |
| Available Package Sizes: | — |
| Packaging: | — |

Beef

ITEM #: B0022

Beef PSMO Tenderloin



| | |
|---------------------------------|---|
| Brand: | — |
| Origin: | — |
| Specifications: | — |
| Case Weight: | — |
| Temperature: | — |
| Available Package Sizes: | — |
| Packaging: | — |

Beef

ITEM #: B0044

Beef Tri Tip



| | |
|---------------------------------|---|
| Brand: | — |
| Origin: | — |
| Specifications: | — |
| Case Weight: | — |
| Temperature: | — |
| Available Package Sizes: | — |
| Packaging: | — |

Beef

ITEM #: B0132

Beef Top Sirloin



-
- Brand:** —
 - Origin:** —
 - Specifications:** —
 - Case Weight:** —
 - Temperature:** —
 - Available Package Sizes:** —
 - Packaging:** —

Beef

ITEM #: B0643

Beef Flap Meat



| | |
|---------------------------------|---|
| Brand: | — |
| Origin: | — |
| Specifications: | — |
| Case Weight: | — |
| Temperature: | — |
| Available Package Sizes: | — |
| Packaging: | — |

Beef

ITEM #: B0662

Beef Prime Boneless Short Rib



- Brand: —
- Origin: —
- Specifications: —
- Case Weight: —
- Temperature: —
- Available Package Sizes: —
- Packaging: —

Beef

ITEM #: B0921

Ground Beef



| | |
|---------------------------------|---|
| Brand: | — |
| Origin: | — |
| Specifications: | — |
| Case Weight: | — |
| Temperature: | — |
| Available Package Sizes: | — |
| Packaging: | — |

Beef

ITEM #: B0952

Sliced Beef Short Plate



Brand: —
Origin: —
Specifications: —
Case Weight: —
Temperature: —
Available Package Sizes: —
Packaging: —

Beef

ITEM #: B1025

Beef Large Intestine



| | |
|---------------------------------|---|
| Brand: | — |
| Origin: | — |
| Specifications: | — |
| Case Weight: | — |
| Temperature: | — |
| Available Package Sizes: | — |
| Packaging: | — |

Beef

ITEM #: B1030

1/3" Sliced Beef short rib



| | |
|---------------------------------|---|
| Brand: | — |
| Origin: | — |
| Specifications: | — |
| Case Weight: | — |
| Temperature: | — |
| Available Package Sizes: | — |
| Packaging: | — |

Beef

ITEM #: B1175

Beef Crown Cut Tongue



| | |
|---------------------------------|---|
| Brand: | — |
| Origin: | — |
| Specifications: | — |
| Case Weight: | — |
| Temperature: | — |
| Available Package Sizes: | — |
| Packaging: | — |

ITEM #: P0204MX

Pork Back Bone



| | |
|---------------------------------|---|
| Brand: | — |
| Origin: | — |
| Specifications: | — |
| Case Weight: | — |
| Temperature: | — |
| Available Package Sizes: | — |
| Packaging: | — |

ITEM #: P0208CA
Pork Back Fat



| | |
|---------------------------------|---|
| Brand: | — |
| Origin: | — |
| Specifications: | — |
| Case Weight: | — |
| Temperature: | — |
| Available Package Sizes: | — |
| Packaging: | — |

ITEM #: P0209NO

Pork Leg Bone 1/2 Cut



Brand: —
Origin: —
Specifications: —
Case Weight: —
Temperature: —
Available Package Sizes: —
Packaging: —

ITEM #: P0621V

Pork Head



-
- Brand:** —
 - Origin:** —
 - Specifications:** —
 - Case Weight:** —
 - Temperature:** —
 - Available Package Sizes:** —
 - Packaging:** —

ITEM #: P5002

Pork CC loin



-
- Brand:** —
 - Origin:** —
 - Specifications:** —
 - Case Weight:** —
 - Temperature:** —
 - Available Package Sizes:** —
 - Packaging:** —

ITEM #: P5002BN

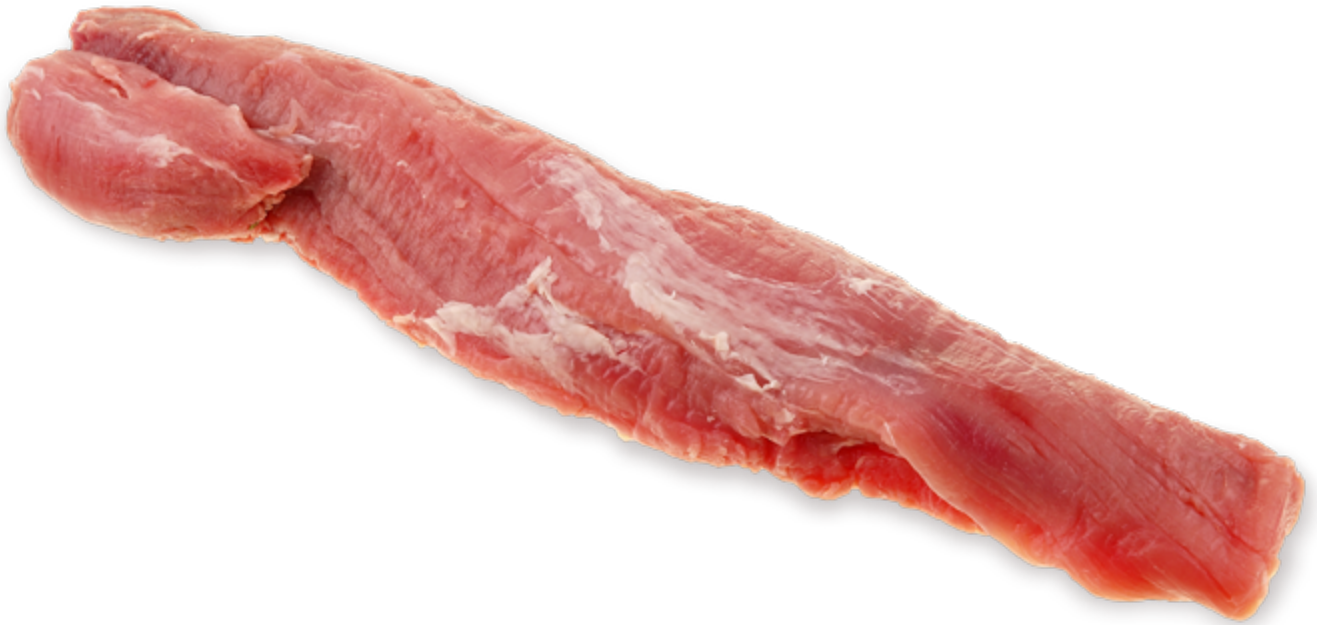
Berkshire Pork Natural CC Loin



Brand: —
Origin: —
Specifications: —
Case Weight: —
Temperature: —
Available Package Sizes: —
Packaging: —

ITEM #: P5011FZ

Pork Tenderloin



| | |
|---------------------------------|---|
| Brand: | — |
| Origin: | — |
| Specifications: | — |
| Case Weight: | — |
| Temperature: | — |
| Available Package Sizes: | — |
| Packaging: | — |

ITEM #: P5030

Pork CT Butt



-
- Brand:** —
 - Origin:** —
 - Specifications:** —
 - Case Weight:** —
 - Temperature:** —
 - Available Package Sizes:** —
 - Packaging:** —

ITEM #: P5301

Sliced Pork Butt



| | |
|---------------------------------|---|
| Brand: | — |
| Origin: | — |
| Specifications: | — |
| Case Weight: | — |
| Temperature: | — |
| Available Package Sizes: | — |
| Packaging: | — |

ITEM #: P5307

Sliced Pork Belly



-
- Brand:** —
 - Origin:** —
 - Specifications:** —
 - Case Weight:** —
 - Temperature:** —
 - Available Package Sizes:** —
 - Packaging:** —

ITEM #: P5529

Single Ribbed Pork Belly



- Brand:** —
- Origin:** —
- Specifications:** —
- Case Weight:** —
- Temperature:** —
- Available Package Sizes:** —
- Packaging:** —

ITEM #: P5529BN

Berkshire Pork Natural Single Ribbed Belly



| | |
|---------------------------------|---|
| Brand: | — |
| Origin: | — |
| Specifications: | — |
| Case Weight: | — |
| Temperature: | — |
| Available Package Sizes: | — |
| Packaging: | — |

ITEM #: P5530

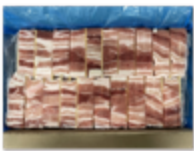
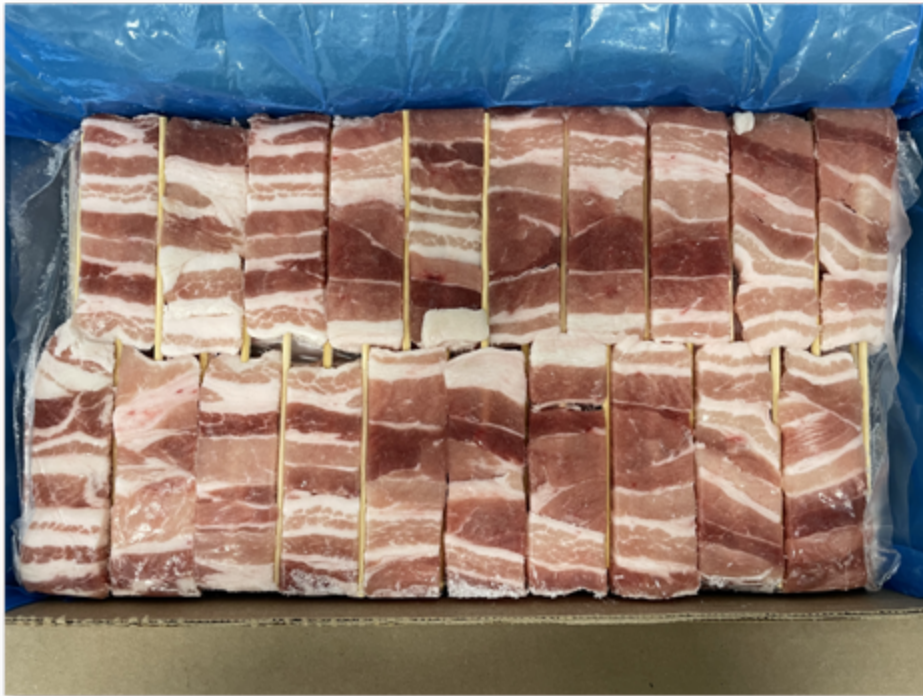
Pork Sheet Belly



-
- Brand:** —
 - Origin:** —
 - Specifications:** —
 - Case Weight:** —
 - Temperature:** —
 - Available Package Sizes:** —
 - Packaging:** —

ITEM #: P5604NO

Pork Belly Skewer



-
- Brand:** —
 - Origin:** —
 - Specifications:** —
 - Case Weight:** —
 - Temperature:** —
 - Available Package Sizes:** —
 - Packaging:** —

Chicken

ITEM #: C0013TY

3-Joint Chicken Wing



| | |
|---------------------------------|---|
| Brand: | — |
| Origin: | — |
| Specifications: | — |
| Case Weight: | — |
| Temperature: | — |
| Available Package Sizes: | — |
| Packaging: | — |

Chicken

ITEM #: C0054CV

CVP Boneless Skinless Chicken Thigh



| | |
|---------------------------------|---|
| Brand: | — |
| Origin: | — |
| Specifications: | — |
| Case Weight: | — |
| Temperature: | — |
| Available Package Sizes: | — |
| Packaging: | — |

Chicken

ITEM #: C0071BT

Battered Chicken Meat



- Brand:** —
- Origin:** —
- Specifications:** —
- Case Weight:** —
- Temperature:** —
- Available Package Sizes:** —
- Packaging:** —

Chicken

ITEM #: C0081

Chicken Heart



| | |
|---------------------------------|---|
| Brand: | — |
| Origin: | — |
| Specifications: | — |
| Case Weight: | — |
| Temperature: | — |
| Available Package Sizes: | — |
| Packaging: | — |

Chicken

ITEM #: C0084

Chicken Gizzard



| | |
|---------------------------------|---|
| Brand: | — |
| Origin: | — |
| Specifications: | — |
| Case Weight: | — |
| Temperature: | — |
| Available Package Sizes: | — |
| Packaging: | — |

Chicken

ITEM #: C0085

Chicken Paw



-
- Brand:** —
 - Origin:** —
 - Specifications:** —
 - Case Weight:** —
 - Temperature:** —
 - Available Package Sizes:** —
 - Packaging:** —

Chicken

ITEM #: C0088

Chicken Liver

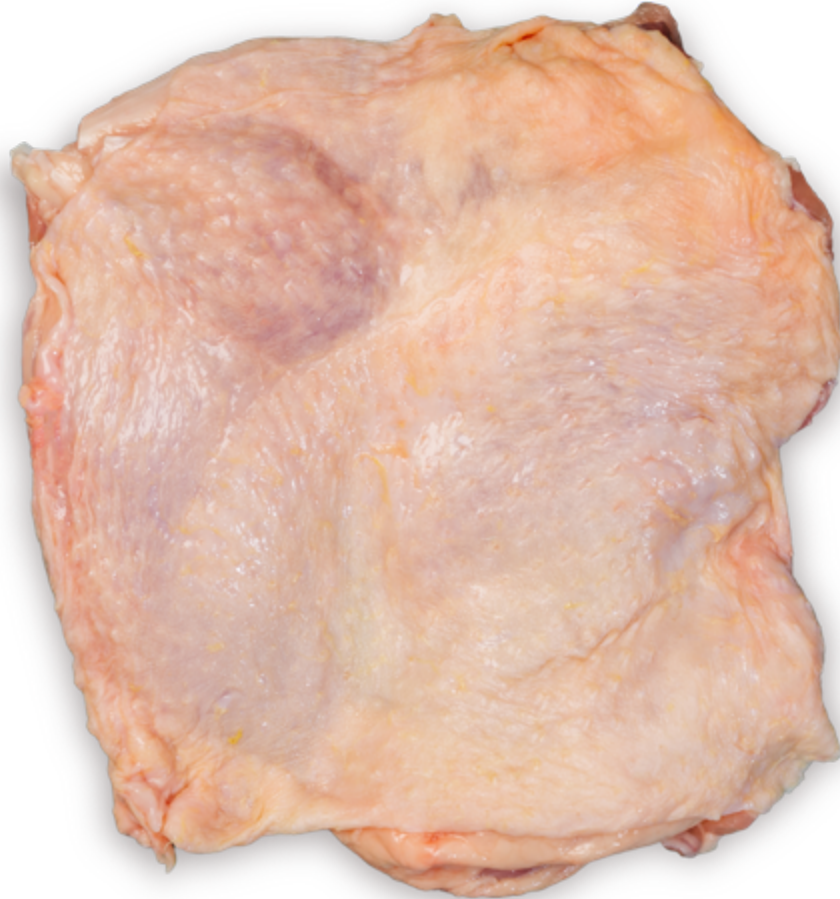


| | |
|---------------------------------|---|
| Brand: | — |
| Origin: | — |
| Specifications: | — |
| Case Weight: | — |
| Temperature: | — |
| Available Package Sizes: | — |
| Packaging: | — |

Chicken

ITEM #: C0210

Frozen Boneless Skin-on Chicken Leg

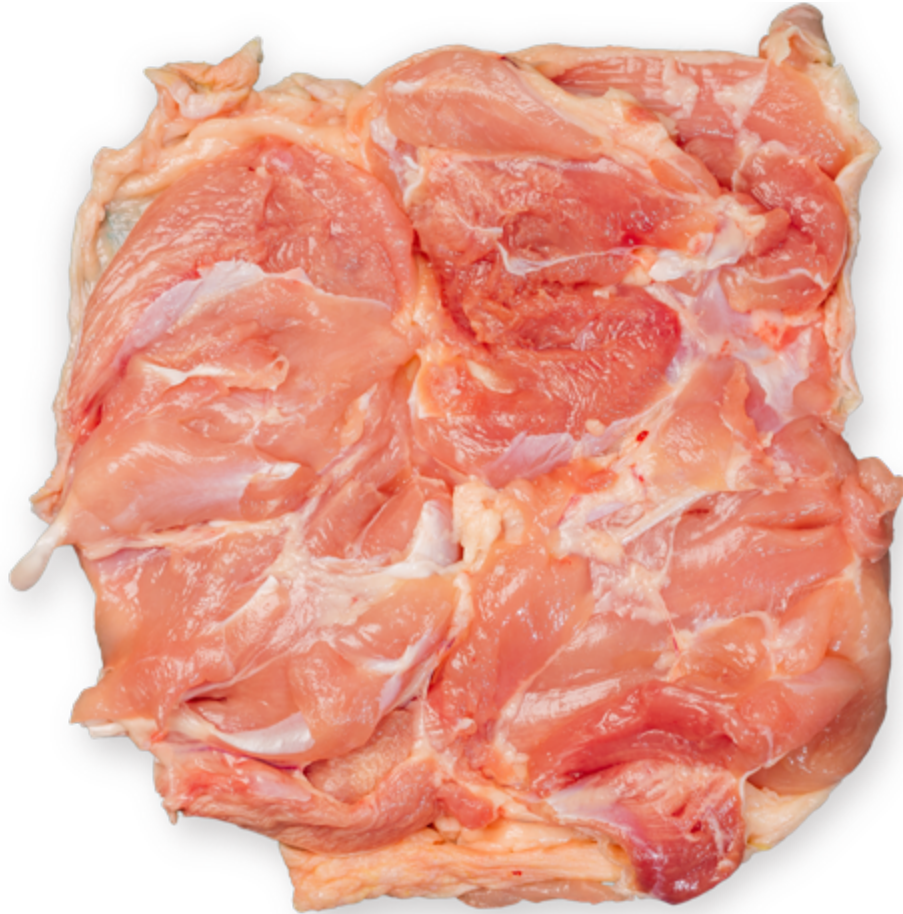


Brand: —
Origin: —
Specifications: —
Case Weight: —
Temperature: —
Available Package Sizes: —
Packaging: —

Chicken

ITEM #: C0212

Frozen Boneless Skinless Chicken Leg



-
- Brand:** —
 - Origin:** —
 - Specifications:** —
 - Case Weight:** —
 - Temperature:** —
 - Available Package Sizes:** —
 - Packaging:** —

Chicken

ITEM #: C0405

Chicken Breast Bone



| | |
|---------------------------------|---|
| Brand: | — |
| Origin: | — |
| Specifications: | — |
| Case Weight: | — |
| Temperature: | — |
| Available Package Sizes: | — |
| Packaging: | — |

Chicken

ITEM #: C0411

Chicken Keel Bone



- Brand:** —
- Origin:** —
- Specifications:** —
- Case Weight:** —
- Temperature:** —
- Available Package Sizes:** —
- Packaging:** —

Chicken

ITEM #: C0421

Chicken Knee Soft Bone



-
- Brand:** —
 - Origin:** —
 - Specifications:** —
 - Case Weight:** —
 - Temperature:** —
 - Available Package Sizes:** —
 - Packaging:** —

Chicken

ITEM #: C1111

Fresh Boneless Skin-on Chicken Legg

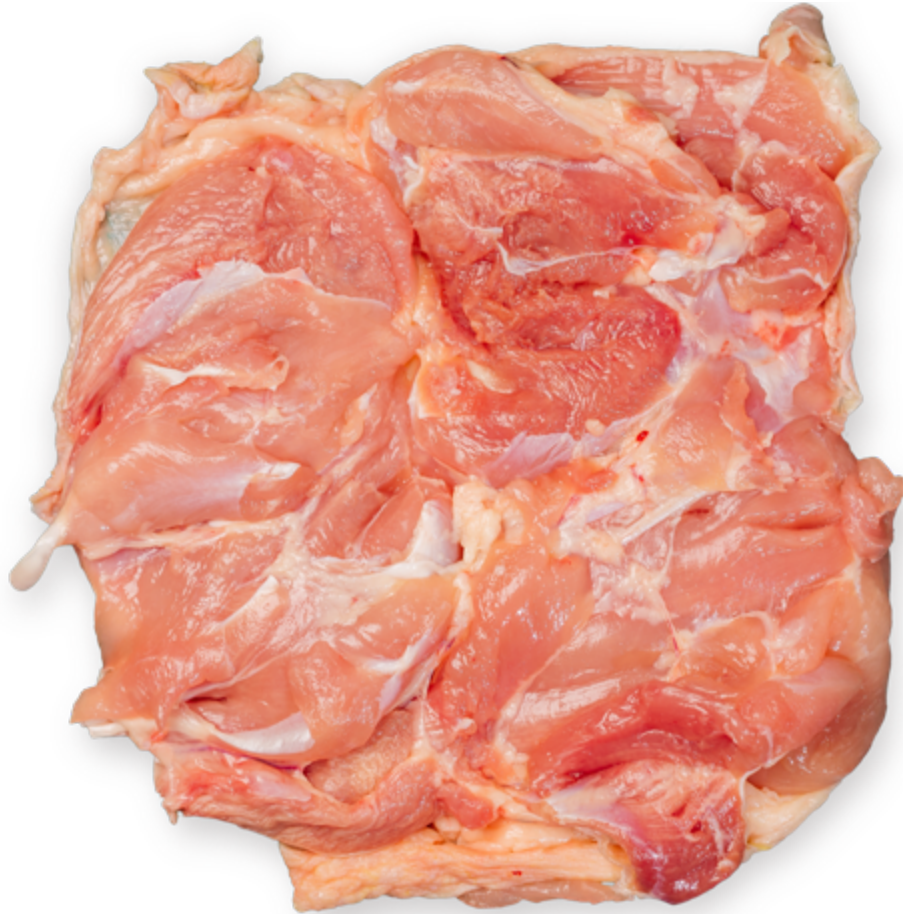


| | |
|---------------------------------|---|
| Brand: | — |
| Origin: | — |
| Specifications: | — |
| Case Weight: | — |
| Temperature: | — |
| Available Package Sizes: | — |
| Packaging: | — |

Chicken

ITEM #: C1211

Fresh Boneless Skinless Chicken Leg



-
- Brand:** —
 - Origin:** —
 - Specifications:** —
 - Case Weight:** —
 - Temperature:** —
 - Available Package Sizes:** —
 - Packaging:** —

Chicken

ITEM #: C1214MOF

Jidori Frozen Skinless Chicken Thigh



- Brand: —
- Origin: —
- Specifications: —
- Case Weight: —
- Temperature: —
- Available Package Sizes: —
- Packaging: —

Other

ITEM #: D0001

Whole Duck



| | |
|---------------------------------|---|
| Brand: | — |
| Origin: | — |
| Specifications: | — |
| Case Weight: | — |
| Temperature: | — |
| Available Package Sizes: | — |
| Packaging: | — |

Other

ITEM #: Q0002

Quail Uzura Egg



-
- Brand:** —
 - Origin:** —
 - Specifications:** —
 - Case Weight:** —
 - Temperature:** —
 - Available Package Sizes:** —
 - Packaging:** —

Tuna

ITEM #: F0013

Albacore Tuna Loins



| | |
|---------------------------------|---|
| Brand: | — |
| Origin: | — |
| Specifications: | — |
| Case Weight: | — |
| Temperature: | — |
| Available Package Sizes: | — |
| Packaging: | — |

Tuna

ITEM #: F1101

Bonito - Katsuo Sumibiyaki Tataki



| | |
|---------------------------------|---|
| Brand: | — |
| Origin: | — |
| Specifications: | — |
| Case Weight: | — |
| Temperature: | — |
| Available Package Sizes: | — |
| Packaging: | — |

Tuna

ITEM #: F1132VC

Tuna Cube



| | |
|---------------------------------|---|
| Brand: | — |
| Origin: | — |
| Specifications: | — |
| Case Weight: | — |
| Temperature: | — |
| Available Package Sizes: | — |
| Packaging: | — |

Tuna

ITEM #: F1183B

Blue Fin Tuna (Ootoro)

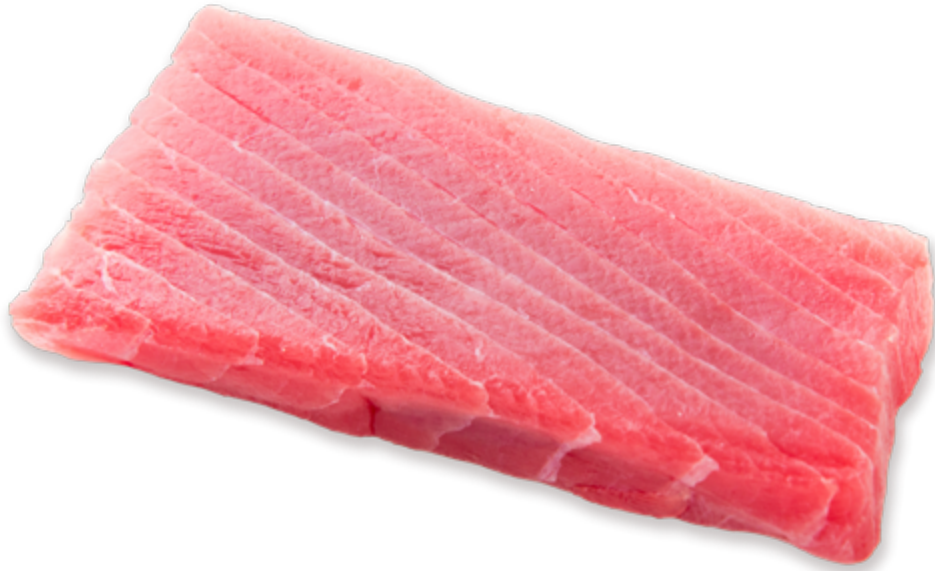


| | |
|---------------------------------|---|
| Brand: | — |
| Origin: | — |
| Specifications: | — |
| Case Weight: | — |
| Temperature: | — |
| Available Package Sizes: | — |
| Packaging: | — |

Tuna

ITEM #: F1183V

Tuna Saku



| | |
|---------------------------------|---|
| Brand: | — |
| Origin: | — |
| Specifications: | — |
| Case Weight: | — |
| Temperature: | — |
| Available Package Sizes: | — |
| Packaging: | — |

Tuna

ITEM #: F1188V

Tuna Loin



| | |
|---------------------------------|---|
| Brand: | — |
| Origin: | — |
| Specifications: | — |
| Case Weight: | — |
| Temperature: | — |
| Available Package Sizes: | — |
| Packaging: | — |

Tuna

ITEM #: F4001

Blue Fin Tuna



- Brand:** —
- Origin:** —
- Specifications:** —
- Case Weight:** —
- Temperature:** —
- Available Package Sizes:** —
- Packaging:** —

Salmon

ITEM #: F0033XL

Fresh Atlantic Salmon (Canada)



| | |
|---------------------------------|---|
| Brand: | — |
| Origin: | — |
| Specifications: | — |
| Case Weight: | — |
| Temperature: | — |
| Available Package Sizes: | — |
| Packaging: | — |

Salmon

ITEM #: F0110

Fresh Atlantic Salmon (Scotland)



| | |
|---------------------------------|---|
| Brand: | — |
| Origin: | — |
| Specifications: | — |
| Case Weight: | — |
| Temperature: | — |
| Available Package Sizes: | — |
| Packaging: | — |

Salmon

ITEM #: F1015

Smoked Salmon



- Brand:** —
- Origin:** —
- Specifications:** —
- Case Weight:** —
- Temperature:** —
- Available Package Sizes:** —
- Packaging:** —

Salmon

ITEM #: F1225C

Coho Salmon Poke Cube



| | |
|---------------------------------|---|
| Brand: | — |
| Origin: | — |
| Specifications: | — |
| Case Weight: | — |
| Temperature: | — |
| Available Package Sizes: | — |
| Packaging: | — |

Fish (Others)

ITEM #: F1003

Hamachi Kama Collar



Brand: —
Origin: —
Specifications: —
Case Weight: —
Temperature: —
Available Package Sizes: —
Packaging: —

Fish (Others)

ITEM #: F1005P

Premium Uwakai Hamachi Fillet



| | |
|---------------------------------|---|
| Brand: | — |
| Origin: | — |
| Specifications: | — |
| Case Weight: | — |
| Temperature: | — |
| Available Package Sizes: | — |
| Packaging: | — |

Fish (Others)

ITEM #: F1008

Hamachi Loin



| | |
|---------------------------------|---|
| Brand: | — |
| Origin: | — |
| Specifications: | — |
| Case Weight: | — |
| Temperature: | — |
| Available Package Sizes: | — |
| Packaging: | — |

Fish (Others)

ITEM #: F1029V

Saba Mackerel Fillet



| | |
|---------------------------------|---|
| Brand: | — |
| Origin: | — |
| Specifications: | — |
| Case Weight: | — |
| Temperature: | — |
| Available Package Sizes: | — |
| Packaging: | — |

Fish (Others)

ITEM #: F1031

Black Cod - Gindara



| | |
|---------------------------------|---|
| Brand: | — |
| Origin: | — |
| Specifications: | — |
| Case Weight: | — |
| Temperature: | — |
| Available Package Sizes: | — |
| Packaging: | — |

Fish (Others)

ITEM #: F1048J

Shimesaba - Vinegared Mackerel



| | |
|---------------------------------|---|
| Brand: | — |
| Origin: | — |
| Specifications: | — |
| Case Weight: | — |
| Temperature: | — |
| Available Package Sizes: | — |
| Packaging: | — |

Fish (Others)

ITEM #: F1049

Whole Saba - Mackerel



| | |
|---------------------------------|---|
| Brand: | — |
| Origin: | — |
| Specifications: | — |
| Case Weight: | — |
| Temperature: | — |
| Available Package Sizes: | — |
| Packaging: | — |

Fish (Others)

ITEM #: F1126MC

Unagi 9oz - BBQ Eel



- Brand: —
- Origin: —
- Specifications: —
- Case Weight: —
- Temperature: —
- Available Package Sizes: —
- Packaging: —

Fish (Others)

ITEM #: F1128

Unagi 10oz - BBQ Eel



| | |
|---------------------------------|---|
| Brand: | — |
| Origin: | — |
| Specifications: | — |
| Case Weight: | — |
| Temperature: | — |
| Available Package Sizes: | — |
| Packaging: | — |

Fish (Others)

ITEM #: F1129MC

Unagi 11oz - BBQ Eel



| | |
|---------------------------------|---|
| Brand: | — |
| Origin: | — |
| Specifications: | — |
| Case Weight: | — |
| Temperature: | — |
| Available Package Sizes: | — |
| Packaging: | — |

Fish (Others)

ITEM #: F1130P

Unagi 12oz - BBQ Eel



| | |
|---------------------------------|---|
| Brand: | — |
| Origin: | — |
| Specifications: | — |
| Case Weight: | — |
| Temperature: | — |
| Available Package Sizes: | — |
| Packaging: | — |

Fish (Others)

ITEM #: F1131

Izumidai - Tilapia Fillet for Sushi



| | |
|---------------------------------|---|
| Brand: | — |
| Origin: | — |
| Specifications: | — |
| Case Weight: | — |
| Temperature: | — |
| Available Package Sizes: | — |
| Packaging: | — |

Fish (Others)

ITEM #: F1139

Unagi 14oz - BBQ Eel



- Brand: —
- Origin: —
- Specifications: —
- Case Weight: —
- Temperature: —
- Available Package Sizes: —
- Packaging: —

Fish (Others)

ITEM #: F1163DL

Mongo Ika - Cuttlefish for Sushi



Brand: —
Origin: —
Specifications: —
Case Weight: —
Temperature: —
Available Package Sizes: —
Packaging: —

Fish (Others)

ITEM #: F2035

Chuka Ika Sansai - Squid Salad



Brand: —
Origin: —
Specifications: —
Case Weight: —
Temperature: —
Available Package Sizes: —
Packaging: —

Shrimp

ITEM #: S1020EQ

20/30 Head on White Shrimp



- Brand:** —
- Origin:** —
- Specifications:** —
- Case Weight:** —
- Temperature:** —
- Available Package Sizes:** —
- Packaging:** —

Shrimp

ITEM #: S1024

Aka Ebi



- Brand:** —
- Origin:** —
- Specifications:** —
- Case Weight:** —
- Temperature:** —
- Available Package Sizes:** —
- Packaging:** —

Shrimp

ITEM #: S1163

16/20 Black Tiger Shrimp HLSO



- Brand: —
- Origin: —
- Specifications: —
- Case Weight: —
- Temperature: —
- Available Package Sizes: —
- Packaging: —

Shrimp

ITEM #: S1262

26/30 White Shrimp HLSO



- Brand:** —
- Origin:** —
- Specifications:** —
- Case Weight:** —
- Temperature:** —
- Available Package Sizes:** —
- Packaging:** —

Shrimp

ITEM #: S1824

Sushi Ebi



- Brand:** —
- Origin:** —
- Specifications:** —
- Case Weight:** —
- Temperature:** —
- Available Package Sizes:** —
- Packaging:** —

Shrimp

ITEM #: S1826

Broken Sushi Ebi



Brand: —

Origin: —

Specifications: —

Case Weight: —

Temperature: —

Available Package Sizes: —

Packaging: —

Shrimp

ITEM #: S1827V

Ikejime Sushi Ebi



- Brand: —
- Origin: —
- Specifications: —
- Case Weight: —
- Temperature: —
- Available Package Sizes: —
- Packaging: —

Shrimp

ITEM #: S1862

21/25 Nobashi Ebi - Stretched Shrimp for Tempura



- Brand:** —
- Origin:** —
- Specifications:** —
- Case Weight:** —
- Temperature:** —
- Available Package Sizes:** —
- Packaging:** —

Shrimp

ITEM #: S1863

26/30 Nobashi Ebi - Stretched Shrimp for Tempura



- Brand:** —
- Origin:** —
- Specifications:** —
- Case Weight:** —
- Temperature:** —
- Available Package Sizes:** —
- Packaging:** —

Shrimp

ITEM #: S1900

Cooked Shrimp Tempura



- Brand:** —
- Origin:** —
- Specifications:** —
- Case Weight:** —
- Temperature:** —
- Available Package Sizes:** —
- Packaging:** —

Shrimp

ITEM #: S1991V

Breaded Shrimp



- Brand:** —
- Origin:** —
- Specifications:** —
- Case Weight:** —
- Temperature:** —
- Available Package Sizes:** —
- Packaging:** —

Shrimp

ITEM #: S1997

Ama Ebi Large - Spot Prawn



- Brand:** —
- Origin:** —
- Specifications:** —
- Case Weight:** —
- Temperature:** —
- Available Package Sizes:** —
- Packaging:** —

Shrimp

ITEM #: S1998

Ama Ebi X-Large - Spot Prawn



- Brand:** —
- Origin:** —
- Specifications:** —
- Case Weight:** —
- Temperature:** —
- Available Package Sizes:** —
- Packaging:** —

Shellfish

ITEM #: F0007

Fresh Uni - Sea Urchin



-
- Brand:** —
 - Origin:** —
 - Specifications:** —
 - Case Weight:** —
 - Temperature:** —
 - Available Package Sizes:** —
 - Packaging:** —

Shellfish

ITEM #: F0043

Hokkigai - Surf Clam



- Brand: —
- Origin: —
- Specifications: —
- Case Weight: —
- Temperature: —
- Available Package Sizes: —
- Packaging: —

Shellfish

ITEM #: F1073M

Green Mussel



- Brand: —
- Origin: —
- Specifications: —
- Case Weight: —
- Temperature: —
- Available Package Sizes: —
- Packaging: —

Shellfish

ITEM #: F1117J

Breaded Oyster



- Brand: —
- Origin: —
- Specifications: —
- Case Weight: —
- Temperature: —
- Available Package Sizes: —
- Packaging: —

Shellfish

ITEM #: F1305FZ

Frozen Uni - Sea Urchin



- Brand:** —
- Origin:** —
- Specifications:** —
- Case Weight:** —
- Temperature:** —
- Available Package Sizes:** —
- Packaging:** —

Shellfish

ITEM #: F1305M

Frozen Uni Muten - Sea Urchin w/out Alum



Brand: —
Origin: —
Specifications: —
Case Weight: —
Temperature: —
Available Package Sizes: —
Packaging: —

Shellfish

ITEM #: S2002

Korean Snow Crab Meat



- Brand:** —
- Origin:** —
- Specifications:** —
- Case Weight:** —
- Temperature:** —
- Available Package Sizes:** —
- Packaging:** —

Shellfish

ITEM #: S2302MM

Jumbo Soft Shell Crab



- Brand: —
- Origin: —
- Specifications: —
- Case Weight: —
- Temperature: —
- Available Package Sizes: —
- Packaging: —

Shellfish

ITEM #: S2303MM

Prime Soft Shell Crab



- Brand: —
- Origin: —
- Specifications: —
- Case Weight: —
- Temperature: —
- Available Package Sizes: —
- Packaging: —

Shellfish

ITEM #: S2304MM

Hotel Soft Shell Crab



- Brand: —
- Origin: —
- Specifications: —
- Case Weight: —
- Temperature: —
- Available Package Sizes: —
- Packaging: —

Shellfish

ITEM #: S2305MM

Whale Soft Shell Crab



- Brand: —
- Origin: —
- Specifications: —
- Case Weight: —
- Temperature: —
- Available Package Sizes: —
- Packaging: —

Shellfish

ITEM #: S2306MM

Medium Soft Shell Crab



- Brand: —
- Origin: —
- Specifications: —
- Case Weight: —
- Temperature: —
- Available Package Sizes: —
- Packaging: —

Shellfish

ITEM #: S3810

Crawfish Salad



- Brand: —
- Origin: —
- Specifications: —
- Case Weight: —
- Temperature: —
- Available Package Sizes: —
- Packaging: —

Shellfish

ITEM #: S4000

S size Hokkaido Scallop

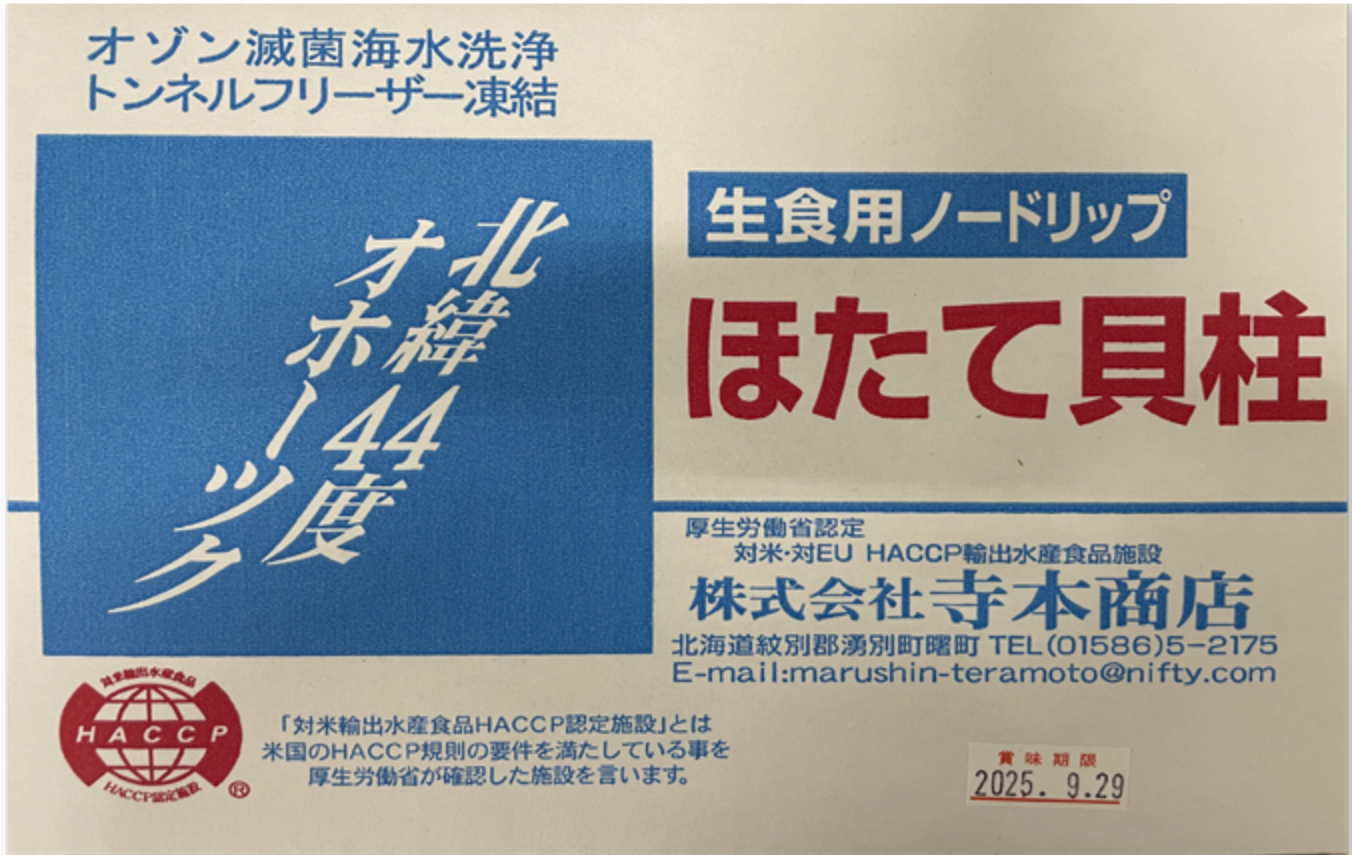


| | |
|---------------------------------|---|
| Brand: | — |
| Origin: | — |
| Specifications: | — |
| Case Weight: | — |
| Temperature: | — |
| Available Package Sizes: | — |
| Packaging: | — |

Shellfish

ITEM #: S4003T

Teramoto 3S size Hokkaido Scallop



| | |
|---------------------------------|---|
| Brand: | — |
| Origin: | — |
| Specifications: | — |
| Case Weight: | — |
| Temperature: | — |
| Available Package Sizes: | — |
| Packaging: | — |

Shellfish

ITEM #: S4013

10/20 Seiho Shoji Brand Japanese Scallop



| | |
|---------------------------------|---|
| Brand: | — |
| Origin: | — |
| Specifications: | — |
| Case Weight: | — |
| Temperature: | — |
| Available Package Sizes: | — |
| Packaging: | — |

Shellfish

ITEM #: S4100DL

Day-Lee 80-120 Bay Scallop



- Brand:** —
- Origin:** —
- Specifications:** —
- Case Weight:** —
- Temperature:** —
- Available Package Sizes:** —
- Packaging:** —

Others

ITEM #: F1051L

Octopus Leg



- Brand:** —
- Origin:** —
- Specifications:** —
- Case Weight:** —
- Temperature:** —
- Available Package Sizes:** —
- Packaging:** —

Others

ITEM #: F1052

Tako 5pc - Whole Cooked Octopus



- Brand:** —
- Origin:** —
- Specifications:** —
- Case Weight:** —
- Temperature:** —
- Available Package Sizes:** —
- Packaging:** —

Others

ITEM #: F1052Y

Hokkaido Tako 5pc - Whole Cooked Octopus



| | |
|---------------------------------|---|
| Brand: | — |
| Origin: | — |
| Specifications: | — |
| Case Weight: | — |
| Temperature: | — |
| Available Package Sizes: | — |
| Packaging: | — |

Others

ITEM #: F1062

Surume Ika Squid



- Brand: —
- Origin: —
- Specifications: —
- Case Weight: —
- Temperature: —
- Available Package Sizes: —
- Packaging: —

Others

ITEM #: F1083

Ikura Chum



- Brand: —
- Origin: —
- Specifications: —
- Case Weight: —
- Temperature: —
- Available Package Sizes: —
- Packaging: —

Others

ITEM #: F1100

XIP Ikura



- Brand:** —
- Origin:** —
- Specifications:** —
- Case Weight:** —
- Temperature:** —
- Available Package Sizes:** —
- Packaging:** —

Others

ITEM #: F1169

Breaded Calamari Rings



- Brand:** —
- Origin:** —
- Specifications:** —
- Case Weight:** —
- Temperature:** —
- Available Package Sizes:** —
- Packaging:** —

Others

ITEM #: F1511

Masago - Capelin Roe



- Brand:** —
- Origin:** —
- Specifications:** —
- Case Weight:** —
- Temperature:** —
- Available Package Sizes:** —
- Packaging:** —

Others

ITEM #: F1650V

Sliced Octopus



- Brand:** —
- Origin:** —
- Specifications:** —
- Case Weight:** —
- Temperature:** —
- Available Package Sizes:** —
- Packaging:** —

Others

ITEM #: F2002

Marine Foods Seaweed Salad



| | |
|---------------------------------|---|
| Brand: | — |
| Origin: | — |
| Specifications: | — |
| Case Weight: | — |
| Temperature: | — |
| Available Package Sizes: | — |
| Packaging: | — |

Others

ITEM #: F2008TW

Tobiko Orange - Flying Fish Roe



- Brand: —
- Origin: —
- Specifications: —
- Case Weight: —
- Temperature: —
- Available Package Sizes: —
- Packaging: —

Others

ITEM #: F2009R

Tobiko Red - Flying Fish Roe



- Brand: —
- Origin: —
- Specifications: —
- Case Weight: —
- Temperature: —
- Available Package Sizes: —
- Packaging: —

Others

ITEM #: F2010T

Tobiko Black - Flying Fish Roe



- Brand: —
- Origin: —
- Specifications: —
- Case Weight: —
- Temperature: —
- Available Package Sizes: —
- Packaging: —

Others

ITEM #: F2012T

Tobiko Wasabi - Flying Fish Roe



- Brand: —
- Origin: —
- Specifications: —
- Case Weight: —
- Temperature: —
- Available Package Sizes: —
- Packaging: —

Others

ITEM #: S2811

Osaki Kanikama - Stick Imitation Crab



| | |
|---------------------------------|---|
| Brand: | — |
| Origin: | — |
| Specifications: | — |
| Case Weight: | — |
| Temperature: | — |
| Available Package Sizes: | — |
| Packaging: | — |

Others

ITEM #: S2822F

Fresh Shredded Imitation Crab



| | |
|---------------------------------|---|
| Brand: | — |
| Origin: | — |
| Specifications: | — |
| Case Weight: | — |
| Temperature: | — |
| Available Package Sizes: | — |
| Packaging: | — |

Others

ITEM #: S2823

Ichiban - Stick Imitation Crab



- Brand: —
- Origin: —
- Specifications: —
- Case Weight: —
- Temperature: —
- Available Package Sizes: —
- Packaging: —

Others

ITEM #: S2825

Louis Kemp Imitation Crab



-
- Brand:** —
 - Origin:** —
 - Specifications:** —
 - Case Weight:** —
 - Temperature:** —
 - Available Package Sizes:** —
 - Packaging:** —

ITEM #: 71000R

Day-Lee Pride Beef Gyoza



Brand: —
Origin: —
Specifications: —
Case Weight: —
Temperature: —
Available Package Sizes: —
Packaging: —

ITEM #: 71030

Day-Lee Pride Pork Gyoza



| | |
|---------------------------------|---|
| Brand: | — |
| Origin: | — |
| Specifications: | — |
| Case Weight: | — |
| Temperature: | — |
| Available Package Sizes: | — |
| Packaging: | — |

ITEM #: 71061

Day-Lee Pride Chicken Gyoza



| | |
|---------------------------------|---|
| Brand: | — |
| Origin: | — |
| Specifications: | — |
| Case Weight: | — |
| Temperature: | — |
| Available Package Sizes: | — |
| Packaging: | — |

ITEM #: 71072R

Day-Lee Pride Shrimp Gyoza



Brand: —

Origin: —

Specifications: —

Case Weight: —

Temperature: —

Available Package Sizes: —

Packaging: —

ITEM #: 71097R

Day-Lee Pride Vegetable Gyoza



| | |
|---------------------------------|---|
| Brand: | — |
| Origin: | — |
| Specifications: | — |
| Case Weight: | — |
| Temperature: | — |
| Available Package Sizes: | — |
| Packaging: | — |

ITEM #: 71301

Day-Lee Pride Umami Pork Leek Gyoza



| | |
|---------------------------------|---|
| Brand: | — |
| Origin: | — |
| Specifications: | — |
| Case Weight: | — |
| Temperature: | — |
| Available Package Sizes: | — |
| Packaging: | — |

ITEM #: 74018

Day-Lee Pride Karaage Chicken



-
- Brand:** —
 - Origin:** —
 - Specifications:** —
 - Case Weight:** —
 - Temperature:** —
 - Available Package Sizes:** —
 - Packaging:** —

ITEM #: F2071

Atsuyaki Tamago - Cooked Egg for Sushi



Brand: —
Origin: —
Specifications: —
Case Weight: —
Temperature: —
Available Package Sizes: —
Packaging: —

ITEM #: F2344

Ikageso Karaage - Battered Squid Legs



- Brand:** —
- Origin:** —
- Specifications:** —
- Case Weight:** —
- Temperature:** —
- Available Package Sizes:** —
- Packaging:** —

ITEM #: H0155

Vegetable Spring Roll



- Brand: —
- Origin: —
- Specifications: —
- Case Weight: —
- Temperature: —
- Available Package Sizes: —
- Packaging: —

ITEM #: H0164

Chicken Katsu Fritter



-
- Brand:** —
 - Origin:** —
 - Specifications:** —
 - Case Weight:** —
 - Temperature:** —
 - Available Package Sizes:** —
 - Packaging:** —

ITEM #: H0169
Sesame Ball



- Brand:** —
- Origin:** —
- Specifications:** —
- Case Weight:** —
- Temperature:** —
- Available Package Sizes:** —
- Packaging:** —

ITEM #: H0185

Menchi Katsu - Breaded Ground Meat Cutlet



- Brand: —
- Origin: —
- Specifications: —
- Case Weight: —
- Temperature: —
- Available Package Sizes: —
- Packaging: —

ITEM #: H1050

Day-Lee Pride Pork Belly Chashu



- Brand:** —
- Origin:** —
- Specifications:** —
- Case Weight:** —
- Temperature:** —
- Available Package Sizes:** —
- Packaging:** —

ITEM #: H1053

Day-Lee Pride Pork Collar Chashu



- Brand:** —
- Origin:** —
- Specifications:** —
- Case Weight:** —
- Temperature:** —
- Available Package Sizes:** —
- Packaging:** —

ITEM #: H1086

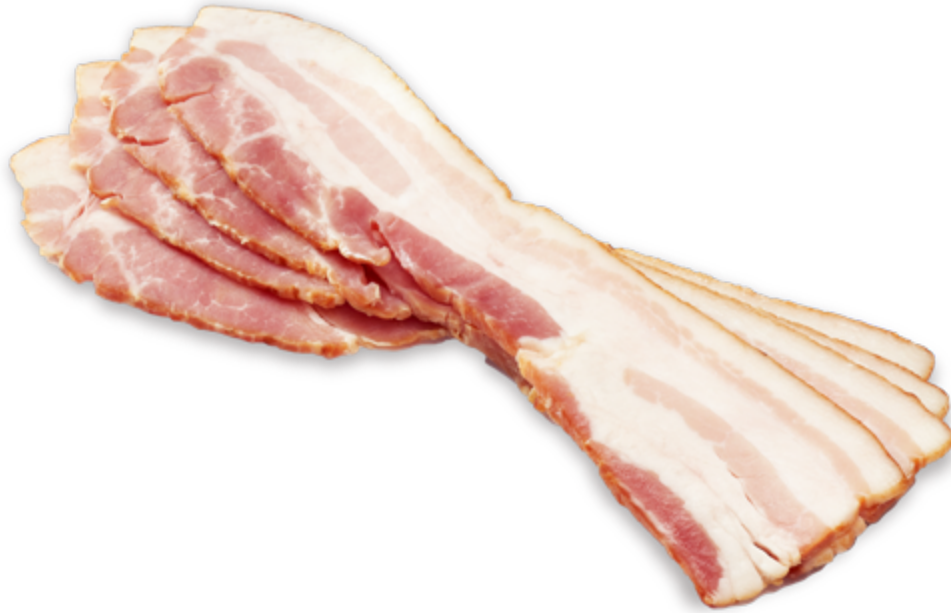
Redondo's Arabiki Sausage



| | |
|---------------------------------|---|
| Brand: | — |
| Origin: | — |
| Specifications: | — |
| Case Weight: | — |
| Temperature: | — |
| Available Package Sizes: | — |
| Packaging: | — |

ITEM #: H5082

Bacon



| | |
|---------------------------------|---|
| Brand: | — |
| Origin: | — |
| Specifications: | — |
| Case Weight: | — |
| Temperature: | — |
| Available Package Sizes: | — |
| Packaging: | — |

ITEM #: H5165

Tonkatsu - Pork Loin Fritter



Brand: —
Origin: —
Specifications: —
Case Weight: —
Temperature: —
Available Package Sizes: —
Packaging: —

ITEM #: 81001

NH Meatless Fried Chicken



- Brand: —
- Origin: —
- Specifications: —
- Case Weight: —
- Temperature: —
- Available Package Sizes: —
- Packaging: —

ITEM #: F2053J

Ajitsuke Inari - Fried Bean Curd



| | |
|---------------------------------|---|
| Brand: | — |
| Origin: | — |
| Specifications: | — |
| Case Weight: | — |
| Temperature: | — |
| Available Package Sizes: | — |
| Packaging: | — |

ITEM #: S2808

Naruto Maki - Fish Cake



| | |
|---------------------------------|---|
| Brand: | — |
| Origin: | — |
| Specifications: | — |
| Case Weight: | — |
| Temperature: | — |
| Available Package Sizes: | — |
| Packaging: | — |

ITEM #: Y1001
Cottonseed Oil



- Brand:** —
- Origin:** —
- Specifications:** —
- Case Weight:** —
- Temperature:** —
- Available Package Sizes:** —
- Packaging:** —

ITEM #: Y1011
Soybean Oil



- Brand:** —
- Origin:** —
- Specifications:** —
- Case Weight:** —
- Temperature:** —
- Available Package Sizes:** —
- Packaging:** —

ITEM #: Y1104T

Soy Sauce Packet



- Brand:** —
- Origin:** —
- Specifications:** —
- Case Weight:** —
- Temperature:** —
- Available Package Sizes:** —
- Packaging:** —

ITEM #: Y1108TS

Nippon Shokken Teriyaki Sauce



- Brand: —
- Origin: —
- Specifications: —
- Case Weight: —
- Temperature: —
- Available Package Sizes: —
- Packaging: —

ITEM #: Y1109

Otafuku Tonkatsu Sauce



- Brand: —
- Origin: —
- Specifications: —
- Case Weight: —
- Temperature: —
- Available Package Sizes: —
- Packaging: —

ITEM #: Y1109TA

Otafuku Takoyaki Sauce



- Brand: —
- Origin: —
- Specifications: —
- Case Weight: —
- Temperature: —
- Available Package Sizes: —
- Packaging: —

ITEM #: Y1115

Nippon Shokken Eel Sauce



- Brand: —
- Origin: —
- Specifications: —
- Case Weight: —
- Temperature: —
- Available Package Sizes: —
- Packaging: —

ITEM #: Y1127DL

Day-Lee Menma - Seasoned Bamboo Shoot



- Brand:** —
- Origin:** —
- Specifications:** —
- Case Weight:** —
- Temperature:** —
- Available Package Sizes:** —
- Packaging:** —

ITEM #: Y1132

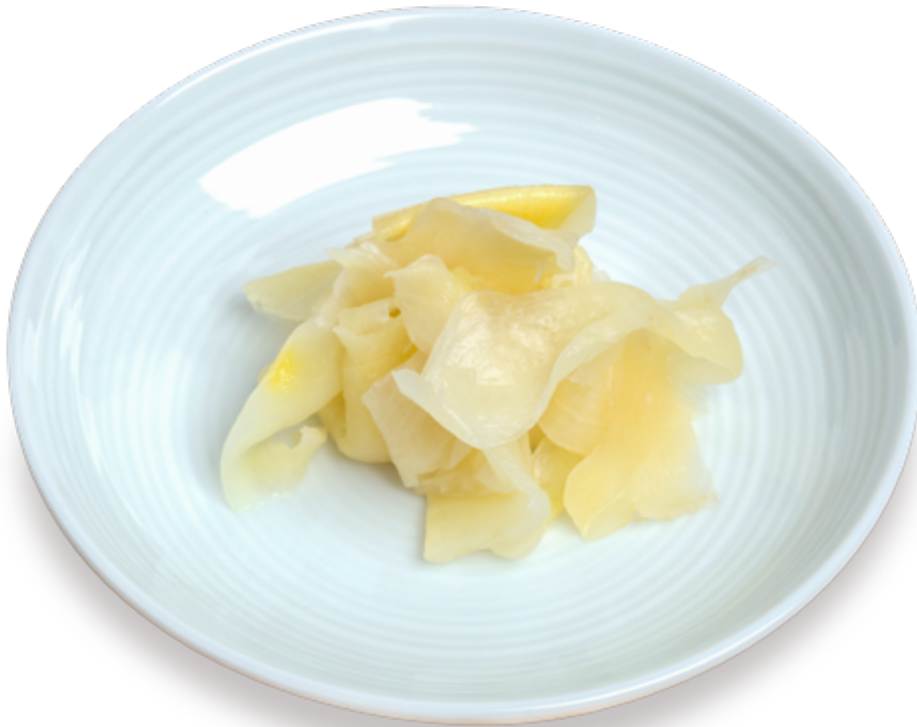
Sushi Shoga Ginger (Pink)



| | |
|---------------------------------|---|
| Brand: | — |
| Origin: | — |
| Specifications: | — |
| Case Weight: | — |
| Temperature: | — |
| Available Package Sizes: | — |
| Packaging: | — |

ITEM #: Y1133

Sushi Shoga Ginger (White)



| | |
|---------------------------------|---|
| Brand: | — |
| Origin: | — |
| Specifications: | — |
| Case Weight: | — |
| Temperature: | — |
| Available Package Sizes: | — |
| Packaging: | — |

ITEM #: Y1138

Sushi Ginger Pack



- Brand:** —
- Origin:** —
- Specifications:** —
- Case Weight:** —
- Temperature:** —
- Available Package Sizes:** —
- Packaging:** —

ITEM #: Y1143

Sushi Nori Half - Seaweed



- Brand: —
- Origin: —
- Specifications: —
- Case Weight: —
- Temperature: —
- Available Package Sizes: —
- Packaging: —

ITEM #: Y1143BF

Sushi Nori Full - Seaweed



- Brand: —
- Origin: —
- Specifications: —
- Case Weight: —
- Temperature: —
- Available Package Sizes: —
- Packaging: —

ITEM #: Y1157S

Kinjirushi Kizami Wasabi



Brand: —
Origin: —
Specifications: —
Case Weight: —
Temperature: —
Available Package Sizes: —
Packaging: —

ITEM #: Y1158C

Powdered Wasabi



| | |
|---------------------------------|---|
| Brand: | — |
| Origin: | — |
| Specifications: | — |
| Case Weight: | — |
| Temperature: | — |
| Available Package Sizes: | — |
| Packaging: | — |

ITEM #: Y1201VN

Takoyaki



- Brand: —
- Origin: —
- Specifications: —
- Case Weight: —
- Temperature: —
- Available Package Sizes: —
- Packaging: —

ITEM #: Y1216

Tetsujin Sriracha Chili Sauce



- Brand: —
- Origin: —
- Specifications: —
- Case Weight: —
- Temperature: —
- Available Package Sizes: —
- Packaging: —

ITEM #: Y1302

Bonito Flakes



- Brand: —
- Origin: —
- Specifications: —
- Case Weight: —
- Temperature: —
- Available Package Sizes: —
- Packaging: —

ITEM #: Y1551

Crispy Tempura Mix



Brand: —
Origin: —
Specifications: —
Case Weight: —
Temperature: —
Available Package Sizes: —
Packaging: —

ITEM #: Y1800

Taikoban Sanuki Udon



- Brand: —
- Origin: —
- Specifications: —
- Case Weight: —
- Temperature: —
- Available Package Sizes: —
- Packaging: —

ITEM #: Y1809

Maruchan Yakisoba Noodles



| | |
|---------------------------------|---|
| Brand: | — |
| Origin: | — |
| Specifications: | — |
| Case Weight: | — |
| Temperature: | — |
| Available Package Sizes: | — |
| Packaging: | — |

ITEM #: Y1851

Takara Ramen Noodles



- Brand:** —
- Origin:** —
- Specifications:** —
- Case Weight:** —
- Temperature:** —
- Available Package Sizes:** —
- Packaging:** —

ITEM #: Y3801C

Sasa No Ha - Bamboo Leaf



- Brand: —
- Origin: —
- Specifications: —
- Case Weight: —
- Temperature: —
- Available Package Sizes: —
- Packaging: —

ITEM #: Y3999

Edamame



- Brand: —
- Origin: —
- Specifications: —
- Case Weight: —
- Temperature: —
- Available Package Sizes: —
- Packaging: —

ITEM #: Y3999SC

Shelled Edamame



- Brand:** —
- Origin:** —
- Specifications:** —
- Case Weight:** —
- Temperature:** —
- Available Package Sizes:** —
- Packaging:** —

ITEM #: Y4002WP

Sushi Tray with Lids SM-1103



| | |
|---------------------------------|---|
| Brand: | — |
| Origin: | — |
| Specifications: | — |
| Case Weight: | — |
| Temperature: | — |
| Available Package Sizes: | — |
| Packaging: | — |

ITEM #: Y4003WP

Sushi Tray with Lids SM-1107



Brand: —
Origin: —
Specifications: —
Case Weight: —
Temperature: —
Available Package Sizes: —
Packaging: —

ITEM #: Y5006L

Wakou Sapporo Miso Base



- Brand: —
- Origin: —
- Specifications: —
- Case Weight: —
- Temperature: —
- Available Package Sizes: —
- Packaging: —

ITEM #: Y5008L

Wakou Tokyo Shoyu Base5



- Brand:** —
- Origin:** —
- Specifications:** —
- Case Weight:** —
- Temperature:** —
- Available Package Sizes:** —
- Packaging:** —

ITEM #: Y5011

Wakou Tonkotsu Base



- Brand:** —
- Origin:** —
- Specifications:** —
- Case Weight:** —
- Temperature:** —
- Available Package Sizes:** —
- Packaging:** —

ITEM #: Y5101L

Sun Noodle Ramen Noodles



Brand: —
Origin: —
Specifications: —
Case Weight: —
Temperature: —
Available Package Sizes: —
Packaging: —

ITEM #: Y7011

Green Tea Cheesecake



- Brand: —
- Origin: —
- Specifications: —
- Case Weight: —
- Temperature: —
- Available Package Sizes: —
- Packaging: —

ITEM #: Y7013

Cheesecake Sampler



- Brand: —
- Origin: —
- Specifications: —
- Case Weight: —
- Temperature: —
- Available Package Sizes: —
- Packaging: —

ITEM #: Y7014

Yuzu Cheesecake



- Brand:** —
- Origin:** —
- Specifications:** —
- Case Weight:** —
- Temperature:** —
- Available Package Sizes:** —
- Packaging:** —

ITEM #: Y70310G

Crepe Cakes



| | |
|---------------------------------|---|
| Brand: | — |
| Origin: | — |
| Specifications: | — |
| Case Weight: | — |
| Temperature: | — |
| Available Package Sizes: | — |
| Packaging: | — |



Day-Lee Foods, Inc.